

FESTOOL

**Light in weight.
Powerful in action.**

PRECISIO CS 50 – the lightest
trimming saw in the world



**Tools for the
toughest demands**

The *PRECISIO* CS 50 trimming saw

All the benefits at glance

Full power perfect control.

The *PRECISIO* CS 50 – exemplary flexibility and

The Precisio family from Festool includes the powerful and versatile CS 50. With this extremely lightweight trimming saw, you'll be fully equipped to carry out a wide variety of fitting and installation jobs. Incorporating a large number of practical solutions, the CS 50 makes work not only easier, but also faster and better.

Extremely lightweight, precise and versatile – the CS 50 is the perfect solution for cutting a wide range of materials with precision and ease.



Splinter-free cuts

Perfectly cut edges on both sides of the workpiece. The splinter-guard moves with the saw to ensure a perfect finish.



Adaptable.

The mitre guide can be rotated through 180° and used on either side of the saw blade without the slightest difficulty. Configuring the saw to suit the application is quick and simple.



Trimmed in a single movement.

Use the CS 50 as a pull saw to quickly cut floorboards and panels up to 200 mm wide - even at 45°.



Set angles easily.

You can even cut bevel angles with the CS 50 precisely and comfortably.



Winner of the
iF Product Design Award 2004

handling.



Tool-less blade change.

The FastFix blade change system from Festool allows you to quickly adapt the machine to the material being cut - without a spanner.



Dust-free work environment.

With the twin extraction ports above and below the work surface, you keep your workplace clean and at the same time protect your health.



Clever operation.

The multifunction handle puts you in complete control: power, blade speed and pull-saw function are all at your fingertips



Convenient.

Always at hand and at the same time protected from dust, the saw blade holder holds up to 4-high-quality Festool saw blades, so you'll have the correct blade on hand for all materials.³⁾

Light and simple.

Light weight and integrated foldaway legs make the CS 50 incredibly easy to transport. Set up in an instant and you can choose from two working heights.

¹⁾ For semi-stationary sawing.

²⁾ Without mitre guide and accessories.

³⁾ Available as accessory.

Specially geared to your needs

Specially geared to your needs

Time for a change: the right blade for every application.

Festool always sets new standards. With the tool-less saw blade change, Festool offers a **worldwide innovation**. The interlocking saw blade holder and quick-locking flange **enable you to change the saw blade entirely without tools in record time**. Even the spindle stop locks into place automatically. Festool sets a new benchmark for ease of use, supporting you in your day-to-day work.

The interlocking saw blade catch eliminates slack: the power is transferred perfectly onto the saw-blade as it draws effortlessly through the material.



1 Effortless removal of the bench plate by means of integrated pressure springs.



2 Easy access to the blade: the retaining flap is unlocked using the rotary knob; the spindle stop locks into place automatically.



3 the quick-release nut allows for tool-less blade change.



4 The saw blade can be easily lifted from the holder and replaced.

The system is the advantage.

Festool – decades of experience in sawing. Hardly any other manufacturer is involved so intensively in the development and production of high-quality hand circular and assembly saws. But that's not enough for us. In line with the system concept, Festool offers a whole **range of high-quality saw blades**.

Every Festool saw blade is manufactured in line with the demands of our customers. This also applies to the saw blades of the CS 50. They have been specially developed and rigorously checked. The **high-quality** steel blade body and the **finest grain carbide-tipped** saw teeth ensure high quality, as does the **computerised production process**. This produces saw blades with the best possible features: high cutting quality, long service life, good sharpening properties, optimised chip guidance, as well as low-vibration and low running noise.

Festool provides you with solutions geared to the material you work on. Each of the five saw blade types for the CS 50 has a specific range of applications. Used in this way, the saw blades ensure **optimal work results** – when you take into account the quality of the saw cut, operating comfort and service life (sawing time up to sharpening). You save time and sharpening costs.

Changing to Festool is worth it! The professional tradesman knows that good quality tools make work considerably easier and saves money.



Tool-free saw blade changing thanks to interlocking saw blade catch and quick-locking flange.

Panther circular saw blade



For rapid sawing with low application of power, especially in the case of rip cuts in solid wood. This power saving is achieved using the special cutting angle. Suitable for hard and soft woods.

Cutting width: 2.6 mm
 Chip angle: 28°
 Zahnform: Panther cross-cut tooth
 Number of teeth: 16
 Type: HW 190 x 2.6 FF PW 16
 Order no.: 492 049

Universal circular saw blade¹⁾



The all-rounder for processing all woods and woody materials (eg chip board) as well as building panels and soft plastics.

Cutting width: 2,6 mm
 Chip angle: 10°
 Tooth shape: cross-cut tooth
 Number of teeth: 32
 Type: HW 190 x 2.6 FF W 32
 Order no.: 492 048

Fine-tooth circular saw blade



The fine-cut blade achieves clean cross cuts free of splinters in solid wood as well as in laminated or veneered materials

Cutting width: 2.4 mm
 Chip angle: 8°
 Tooth shape: cross-cut tooth with unevenly pitched teeth
 Number of teeth: 48
 Type: HW 190 x 2.4 FF W 48
 Order no.: 492 050

Laminate/mineral material circular saw blade



Special saw blade for laminated panels and mineral materials. Thanks to special fine-grain carbide, this saw blade is ideal for these materials, achieving a significantly longer service life.

Schnittbreite: 2.6 mm
 Chip angle: 4°
 Tooth shape: trapezoid flat tooth
 Number of teeth: 54
 Type: HW 190 x 2.6 FF TF 54
 Order no.: 492 052

Aluminium/plastic circular saw blade



For aluminium profiles and plates as well as hard and reinforced plastics.

Cutting width: 2.6 mm
 Chip angle: -5°
 Tooth shape: trapezoid flat tooth
 Number of teeth: 58
 Type: HW 190 x 2.6 FF TF 58
 Order no.: 492 051

1) Included in the scope of delivery.

The *PRECISIO CS 50* trimming saw

In detail and in action

Making things easy for you: *PRECISIO CS 50* for more comfort during work.

Weight



Always there.

The first time you pick up the CS 50 you can't help but notice: its very low weight of 17.4 kg. The compact design makes the Precisio CS 50 ideal for any application.

The CS 50 may be light, but it is also very sturdy: the special material, combined with the **honeycomb construction** of the supports and struts, ensures minimum weight and high stability.

Never trip up again: the practical cable holder and foldaway legs of the CS 50 make it possible, as the legs are integrated into the machine. The CS 50 can be set up and ready for work in an instant. Depending on requirements, you always have a choice of two working heights.



Simply fold out: firm leg clamps give dependable stability



Secure on the floor: the legs can be folded away safely and easily.



Integrated cable holder for safety and convenience during transport.

Handling



Everything in one hand.

Drawing mechanism, switching to continuous or brief operation, instantly switching off or speed adjustment – the **multifunction handle** combines all the operating elements in one easy to use handle.

This convenient control of the machine's functions is made possible by the **use of digital electronics**. All of the operating functions can be controlled centrally.

For example, you can approach the scribe mark **accurate to one millimetre**, switch on, saw, switch off. And you're done. This provides safety with the highest operating comfort.



'On' switch

'Instant off'

Locking button

Speed preselection

Functions



Used practically everywhere.

Save on a second tool: as a bench trimming saw, the CS 50 combines two types of saw, enabling **cross and rip cuts** without requiring conversion.

The **mitre guide** which can be turned through 180°, provides you with an enormous variety of applications. On the one hand, it enables rapid changes from cross to rip-cuts simply by adjusting it down, without time-consuming conversions. On the other hand, locking points enable highly accurate angle settings within the shortest possible time.



Problem-free switching from rip cuts to cross-cutting.



Mitre guide that can be used all around.



Cross-cutting up to 294 mm.



Cross-cut (trim) 200 mm panels at 45° in one movement.

Precision



Turn, swivel, angled cut.

On the CS 50, angle and size settings can be found in one place. The **ergonomic arrangement** of the operating elements and clearly legible design of the scales mean you always have a clear view even during complicated sawing work.

All the scales of the CS 50 can be adjusted. This enables **exact setting of cutting angles** as well as saw blade thicknesses.

Simple precision is provided by the spacer wedge that can be lowered: simply press it downwards and the CS 50 is equipped for all covered cuts – without any complicated setup operations.



Angled cuts up to 47° – precisely adjusted.



Splinterguard moves with the saw for splinter-free cuts.



Practical: spacer wedge can be lowered.



Scales can be adjusted and set to the saw blade thickness.

The *PRECISIO* CS 50 trimming saw

In detail and in action

Durability



Well-conceived and reliable.

Reliability in use and long service life – is ensured on the CS 50 by the intelligent, programmed digital electronics and well-conceived construction, using high-quality materials such as magnesium.

The motor, saw blade and workpiece are specially protected on the CS 50 by the digital electronics. They automatically regulate the motor speed and supply additional power when the load rises. At the same time, overheating of the motor is prevented and **peaks in current are suppressed**. Start-up is particularly gentle. The digital electronics also ensure rapid deceleration of the saw blade by means of the quick-acting safety brake.

The benefits achieved on the CS 50 with regard to lightness have not impaired safety. The CS 50 is particularly suited to mobile use: the honeycomb design of the supports ensures stability and reduces the mass at the same time. All moving parts are **designed for continuous** loads even when used for heavy-duty tasks.



The honeycomb reinforcement is extremely durable.



Variable speed adjustment with digital electronics.

Economic efficiency

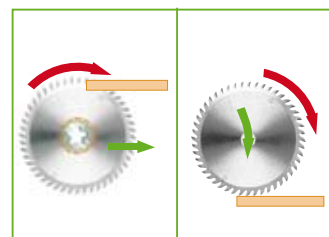


So that you can make the best cut.

More economical in use, superior handling, and low saw blade wear: the CS 50 trimming saw is the perfect tool for rip and cross-cuts – without annoying conversions.

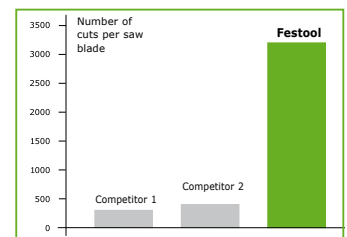
With the bench trimming saw, you always saw **with the best possible plunge angle**. This is gentler on the saw blade, which means that, in comparison with circular cross-cut saws, **it-remains usable up to eleven times longer**. The sawing principle for trimming saws also means that the cutting forces are up to four times lower than for circular cross-cut saws. These results were determined by the **Institute for Machine Tools** at the University of Stuttgart.

Source: bm-online 08/2002 "Ablängen von Paneelen: Zugsäge hat die Nase vorn" ("Cutting panels to length: trimming saw leads by a nose")



Optimised, even approach angle.

Unfavourable angle for plunge-cutting.



Comparison of service life of saw blades (laminated panels).

Mobile or stationary? That's up to you.

As a particularly light and precise bench trimming saw, the CS 50 is perfectly suited to versatile, mobile use in fitting and installation. However, the CS 50 can do even more: with the matching system accessories, it is quickly and easily transformed into a complete sawing station. With the right accessories, cross-cuts up to 830mm in length are no problem either.



Trimming stop

The retractable stop with measuring tape and stop tabs provides support and additional precision.

Sliding table

With an extended displacement path, it enables cross-cutting up to 830 mm in length

Table extension

Engaged at the end of the bench, this provides additional support for workpieces during rip cuts.

Support

The support can be pushed in fully and used on both sides to brace the workpieces during cross-cutting.

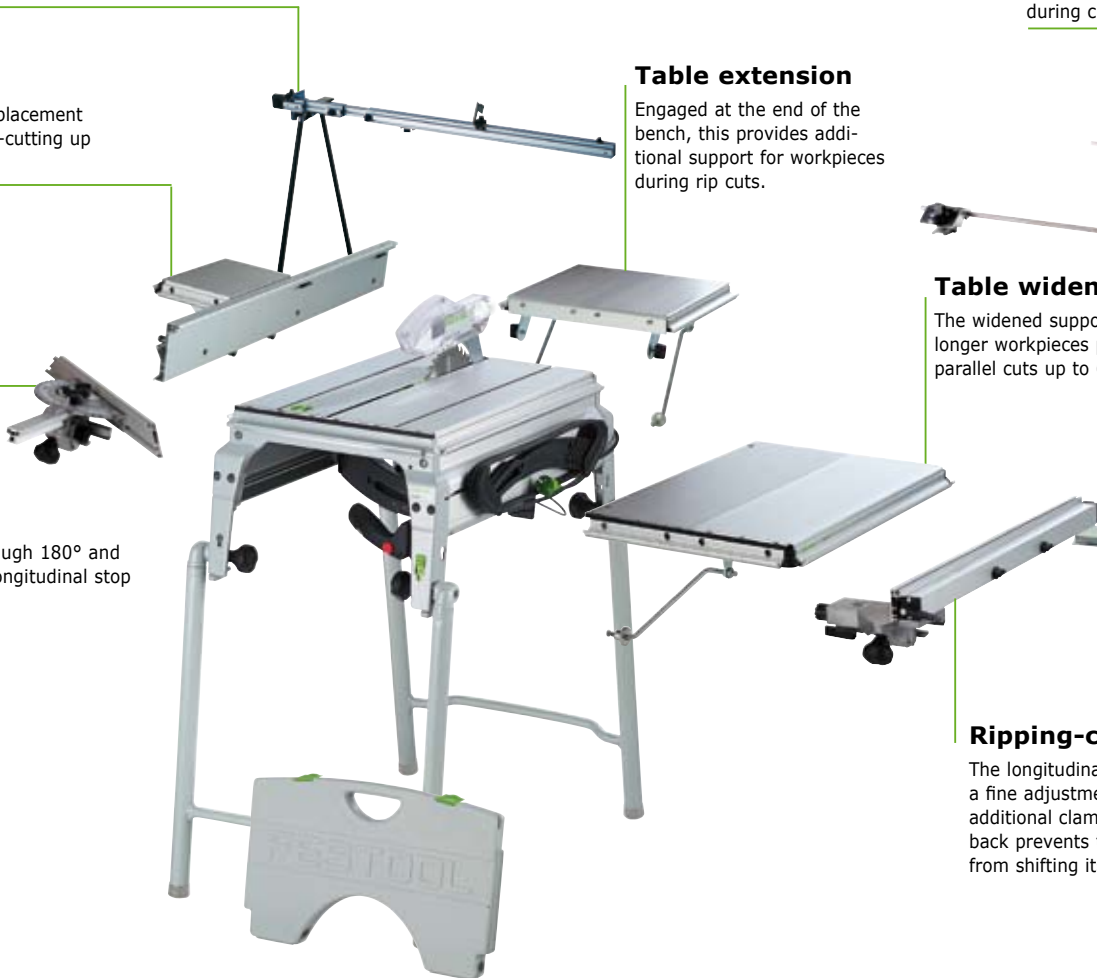


Table widener

The widened support area for longer workpieces permits parallel cuts up to 610 mm.

Mitre guide

You can swivel it through 180° and use it as a cross or longitudinal stop at any position.



Ripping-cut fence

The longitudinal stop has a fine adjustment and the additional clamp at the back prevents the stop from shifting its position.



Saw blade holder

Holds up to 4 saw blades, always to hand, protecting them against dirt and damage.

Roller stand

Stabilises long workpieces for longitudinal and cross cuts.



The PRECISIO CS 50 trimming saw

Data and fact

CS 50 EB Floor



Ideal for floor specialists.

- Only 17.4 kg.1)
- Trim 200 mm wide panels at 45° in a single movement.

Version

Order no.

Scope of delivery: HW saw blade Z32, angle stop, 3 splinterguards, digital MMC electronics, workpiece holder, service tool, in box

CS 50 EB Floor

561 208

Not available in Australia

CS 50 EB



Perfectly equipped for fitting and installation jobs.

- Equipped with foldaway legs and extraction set, it can be used without the slightest difficulty on building sites and in the workshop.
- Sturdy but light, it can withstand even heavy-duty use.

Version

Order no.

Scope of delivery: HW saw blade Z 32, mitre guide, foldaway legs, 3 x splinterguard, digital MMC electronics, extraction set, workpiece holder, service tool, in box

CS 50 EB AUS 240 V

561 195

CS 50 EB Set



Everything for demanding applications.

- High-quality sawing station that you can also use to deal with large workpieces and difficult work without the slightest problem.
- Simple to assemble, reducing equipping times on site and in the workshop.
- Comprehensive accessories for a wide range of applications.

Version

Order no.

Scope of delivery: HW saw blade Z 32, mitre guide, ripping-cut fence sliding table, table lengthener, table widener, foldaway legs, 3 x splinterguard, digital MMC electronics, extraction set, workpiece holder, service tool, in box

CS 50 EB-Set AUS 240 V

561 203

Technische Daten

Rated power	1,200 W
Speed of saw blade	1,600 – 4,200 rpm
Cutting depth at 90°	0 – 52 mm
Cutting depth at 45°	0 – 37 mm
Draw distance	304 mm
Trimming width at 16 mm thickness	294 mm
Rip cuts	223 mm
Saw blade diameter	190 mm
Inclined position	0(-2)° bis 45(47)°
Connection for dust extraction	D 27/36 mm
Weight CS 50 EB Floor ¹⁾	17.4 kg
Weight CS 50 EB ¹⁾	19.5 kg
Weight of angle stop	1.7 kg



¹⁾ Without mitre guide and accessories.

System accessories



Sliding table for CS 50
simple and fast to fit and remove; convenient sliding table; two securing positions; max. cutting width for cross-cutting: 830-mm
CS 50 ST, order no. 492 100



Table lengthener for CS 50
simple to fit; folds away, 400 mm longer support surface; to support long workpieces for sawing rip cuts
CS 50 VL, order no. 492 092

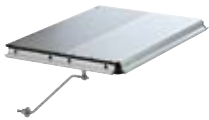


Table widener for CS 50
adjustable scale; simple and fast to fit and remove; safe and precise sawing to width; max. cutting width for rip cut: 610 mm
CS 50 VB, order no. 492 090



Ripping-cut fence for CS 50
with fine adjustment and clamping on opposite side; can be operated from front; with folding stop profile for precise and safe rip cuts
CS 50 LA, order no. 492 095



Support for CS 50
support can be used on both sides; supports workpieces when cross-cutting; for PRECISION CS 50
CS 50 AF, order no. 492 242



Trimming attachment for CS 50, CS 70
for use on the CS 50 EB and CS 70 EB; retractable, with support, measuring tape and stop tabs
Length: 1200 – 2050 mm
CS 70 KA, order no. 488 063



Mitre guide for CS 50, CS 70
angle stop can be swivelled through 180°, with locking points; can be used from all sides; for work with 2 stops
CS 70 WA, order no. 488 451



Adjustable stops for CS 50, CS 70
for holding workpieces at the mitre guide CS 70 KA and basic KA 100/200
CS 70 AR, order no. 488 560

Adjustable stops for CS 50, CS 70
for holding workpieces at the angle stop CS 50 WA and CS 70 WA and basic WRA-500
CS 70 WA-AR, order no. 491 712



Splinterguard for CS 50
for low breakout cutting edges on both sides for Precision CS 50
Package content: 10
CS 50 SP/10, order no. 492 241



Foldaway legs for CS 50
saw can be set up and taken down in seconds; two working heights
CS 50 KB, order no. 492 245

System accessories



Extraction set for CS 50, CS 70
included in the scope of delivery of the Precisio CS 50 EB; consisting of: suction hose D 27 x 2.0 m, suction hose D 36 x 1.0m, Y-connection pieces
CS 70 AB, order no. 488 292



Roller stand for CS 50, CS 70
for fixing long workpieces for rip and cross-cuts
CS 70 RB, order no. 488 711



Saw blade holder for CS 50
Protects saw blades. The holder ensures protection against dirt and means that the saw blades are always where they should be – by the saw, and quickly to hand when needed.
Scope of delivery: saw blade holder without blades.
CS 50 SGA, order no. 492 228



The range of saw blades for the CS 50 can be found on page 5.

Festool bench trimming saws

Backed by a system: the *PRECISIO* trimming saws.

PRECISIO – a fitting name for the Festool trimming saws. The PRECISIO CS 50 is the perfect complement to the proven CS-70. The performance of the ,powerful CS 70 used for large-format workpieces is matched by the CS 50 for mobile use. And it is just as effective.

The same applies to both: Perfect cutting quality in one movement, optimised handling with the highest level of safety and outstanding durability. In a word: **PRECISIO**.

CS 70



CS 50

Online product catalogue

Service

Online shops

News and special offers

Dealer search

Test reports

Example applications

3D animation

Your link to more information ...

On our current Festool site you can find information about

- the complete product range
- interesting new products
- countless product animations
- many helpful application examples, and
- our comprehensive service offer.

And all of this at your leisure.

Do you want to be able to order around the clock? This is possible at **www.festool.com.au**. Simply visit the online shops of our system partner dealers and place your order



www.festool.com.au

Tooltechnic Systems (AUST) Pty Ltd

63-65 Quantum Close
Dandenong South VIC 3175
Postal address: PO Box 4401
Dandenong South VIC 3164

Phone: 1800 063 900
Fax: 03 9799 9766
Service Hotline: 1800 063 900
E-mail: festool@festool.com.au

www.festool.co.nz

Tooltechnic Systems (NZ) Ltd

27 Greenmount Drive
East Tamaki 2141, Auckland
Postal address: PO Box 258-078
Greenmount 2141, Auckland

Phone: (09) 272 2220
Fax: (09) 272 2230
E-mail: sales@tooltechnic.co.nz

Three years guarantee – that means above all three years security.



Regardless of how long the warranty period is set to by law – with Festool you're guaranteed to be better off. Festool grants 12 months guarantee from the date of purchase, as long as the tool has been used properly. This guarantee is automatically extended by 2 years, to make a total of 3 years, provided the warranty form that is enclosed with every new tool is filled in completely and sent to Festool within 30 days of the date of purchase.

Make a contribution yourself – support the WWF together with Festool!



Our most important contribution to preserving our environment is the quality of our products, which are characterised by their durability and positive eco-features such as recyclability and environmental compatibility.

By purchasing one of the promotional products, you are supporting our collaboration with the WWF and receive a WWF panda keyring pendant as a thank-you gift.

© 1986 Panda symbol WWF – World Wide Fund For Nature (Formerly World Wildlife Fund)
® „WWF“ and „living planet“ are WWF Registered Trademarks

www.festool.com/wwf

Dealer