

No. 542

Frame joints with the DOMINO



A

Description

The DOMINO wood jointing system can be used easily and quickly to create frame joints frequently required by joiners and carpenters. The DOMINO combines the properties of a biscuit dowel (flexible and non-twisting) with those of a regular round dowel (can be fixed, high strength).



542/01

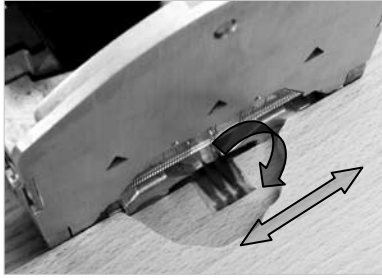


542/02

The DOMINO wood jointing system is a unique jointing system. It consists of the DOMINO jointer DF 500 Q developed by Festool and a loose spigot in the shape of the oval DOMINO (see Fig. 542/2).

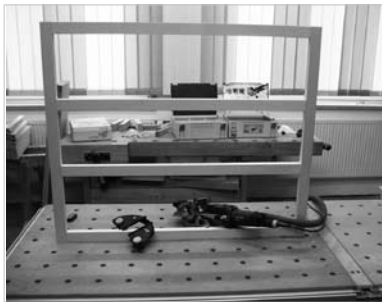
The DOMINO is available in 6 sizes:

- 4 x 20 mm
- 6 x 40 mm
- 8 x 40 mm
- 8 x 50 mm
- 10 x 50 mm



542/03

The routing movement of the DOMINO jointer DF 500 Q (see Fig. 542/3) is unique among hand-held machines. The special feature is the simultaneous rotary and swinging movement of the cutter. This feature guarantees kickback-free, safe work (see Fig. 542/3).



542/04

In this application example, the DOMINO wood jointing system is used to build a frame made of spruce (see Fig. 542/4).

DOMINOs of size 6 x 40 mm are processed.



542/05

B

Tools/accessories

Basic equipment:

Denomination	Order no.
DOMINO jointer DF 500 Q GB 240V (see Fig. 542/5)	574 256
DOMINO 6 x 40 mm	493 297
DOMINO cutter D 6 mm	493 491
DOMINO trim stop LA-DF 500 (see Fig. 542/6)	493 487

The following Festool accessories can help you make a frame joint:

Multifunction table MFT 1080	490 888
Clamps MFT-SP	488 030
Suction hose plug it D 27	456 746

CTM series mobile dust extractor



542/06



542/07

Changing cutters:

Selection and assembly of the necessary cutter:
A cutter diameter of 6 mm is used in the example.

Important: Prior to changing the tool, the Plug it cable must be removed from the machine!

1. Raise the release lever until the machine disengages using the size 8 open-ended spanner provided for this purpose (see Fig. 542/9).
2. Disconnect the motor unit from the guide frame (see Fig. 542/10).
3. Hold in the spindle lock (see Fig. 542/9, red arrow) and use the size 8 open-ended spanner to screw the cutter onto the cutter spindle and tighten it.
4. Release the spindle lock.
5. Slide on guide frame and motor unit until they audibly engage.
6. Connect the Plug it cable and extractor hose.



542/08



542/09

Adjusting dowel hole width:

At the DOMINO jointer, the dowel hole width can be adjusted easily (see Fig. 542/11).

With a frame joint, the first elongated hole is cut to fit the biscuit dowel exactly (see Fig. 542/12). As with a round dowel, alignment to the front edge is exact.

The next DOMINO holes can be routed with the next larger hole width. The DOMINOs then have play in the cut.

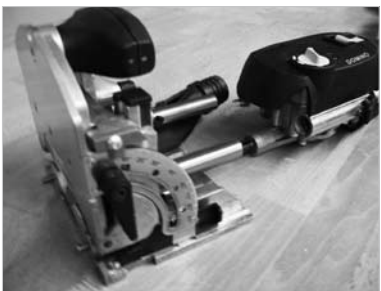
The hole width can be set with the rotary switch while the machine is running!

DOMINO hole widths:

Setting 1: 14 mm plus cutter diameter

Setting 2: 20 mm plus cutter diameter

Setting 3: 24 mm plus cutter diameter

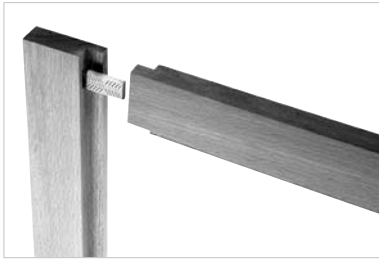


542/10

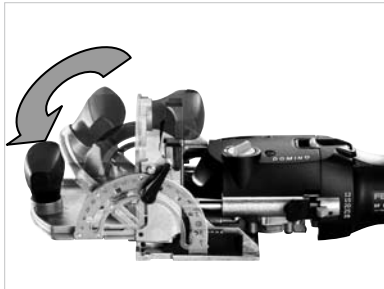
The D6 cutter and the first setting for the DOMINO hole width (see Fig. 543/11) are used to create an elongated hole with a width of 20 mm; the middle setting then produces a displacement path of 4 mm.



542/11



542/12



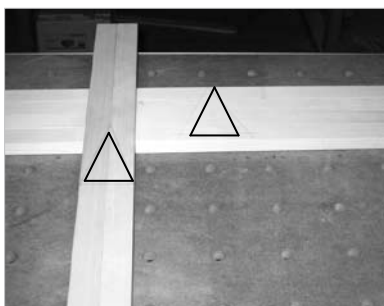
542/13



542/14



542/15



542/16

C Preparation/set-up

Set the router table to 90° (see Fig. 542/13).

Set the routing depth of the dowel length (see Fig. 542/14).

A DOMINO 6 x 40 mm is used in the example.

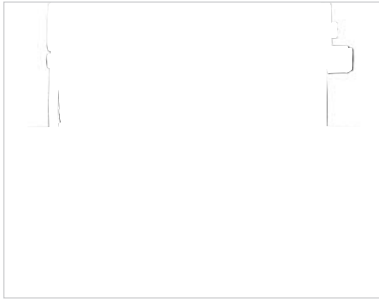
Set the routing depth to 20 mm (corresponds to half of the dowel length).

Set the routing height at the quick selection to correspond to the material thickness (see Fig. 542/15).

E Procedure

The parts are arranged in the pairs in which they are subsequently assembled.

Tip: Making a mark (joiner's triangle, see Fig. 542/15) helps to find the place for routing.



542/17

At the vertical wooden frame sections, the position of the cross bars is marked. In the example, the section is divided into three fields of equal size and routing is then along the scribe mark via the viewing window (see Fig. 542/17).



542/18

The wooden frame section is attached securely with clamping elements on the multifunction table (see Fig. 542/18).



542/19

Position the DOMINO jointer DF 500 Q with the help of the centre line in the viewing window and cut the first DOMINO hole (see Fig. 542/19). This sets the narrow hole width at the machine.



542/20

With the help of the trim stop, the DOMINOs are cut on the face centrally into the cross frame (see Fig. 542/20).



542/21

General:

The trim stop (see Fig. 542/21) can be used for fast and easy face-side processing of narrow strips. Simply set the trim stop to the strip width to do this. Then you can cut the strips quickly and easily. The trim stop is particularly useful when you have to cut several identical strips.



542/22

When all parts have been cut, the frame is joined together and glued (see Fig. 542/22).



542/23

The DOMINO Assortment Systainer contains a clear arrangement of all DOMINO sizes (see Fig. 541/24).



Detailed information on the DOMINO jointing system is also available on CD-ROM.

FESTOOL

Our application examples are recommendations which have been tried and tested in practice. However the different conditions are completely outside of our control. We therefore do not provide any form of guarantee. Any legal claims arising out of this are not to be made against Festool. Make sure you follow the safety directions and product instructions provided with the product.

www.festool.co.uk